

PART OF N.E. 1/4 & S.E. 1/4 OF SEC. 32, T.7N., R.2W., S.L. 9.&M.

PLAIN CITY BLOCK 5 PLAT A

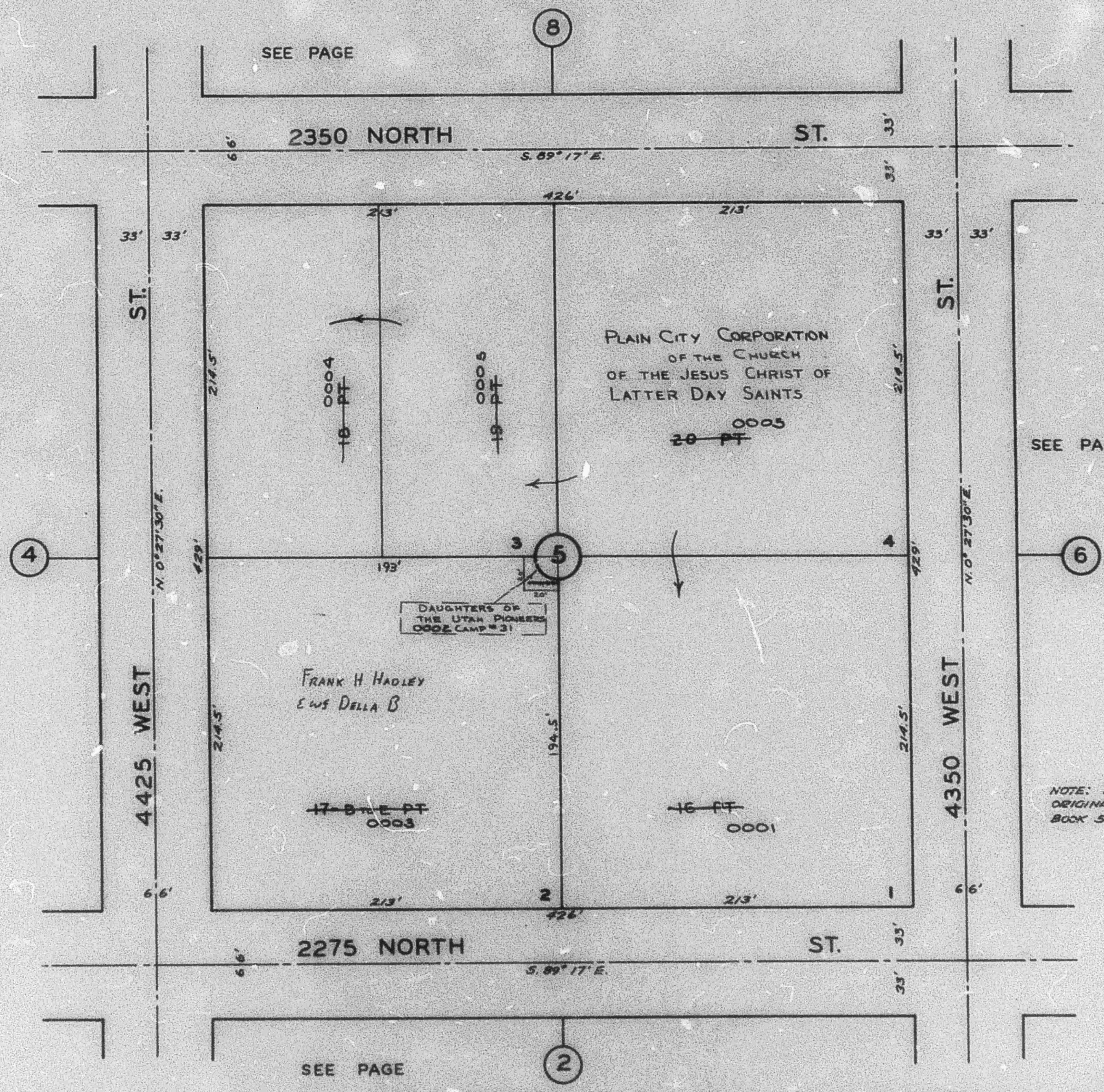
TAXING UNIT 21

PREFIX 24-029

SCALE: 1" = 50'

SEE PAGE

SEE PAGE



SEE PAGE

2350 NORTH ST.

ST.

ST.

ST.

4425 WEST

4350 WEST

2275 NORTH ST.

ST.

SEE PAGE

NOTE: DATA FROM ORIGINAL PLAT BOOK 5, PAGE 80